

Emerson Bus Company



2017 OUTBACK DISCOVERY AND ISLAND ESCAPE

9 DAY DURATION



DAY 1

Tuesday May 16th

Tablelands to Charters Towers

- Travel down the Coast to Townsville
- Visit the Strand (Townsville)
- Overnight Charters Towers

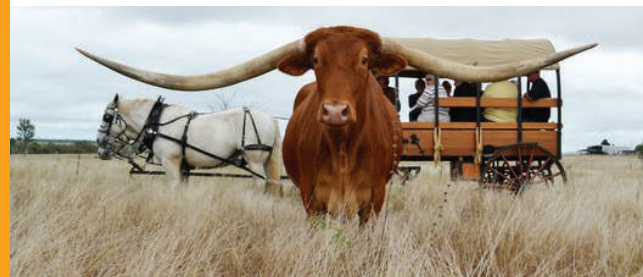
MEALS: M/T, L, D



DAY 2

Wednesday May 17th

Touring in Charters Towers



- Texas Long Horn Tour and lunch
- Venus Battery Tour
- Free time in CBD
- Afternoon tea at Towers lookout
- Overnight in Charters Towers

MEALS: B, L, D

DAY 3

Thursday May 18th

Charters Towers to Winton

- Early rise this morning
- Morning tea in Hughenden
- Travel to Winton
- Regional chat with local over lunch at North Gregory Hotel, Winton
- Free time to explore Winton
- Optional visit to the Heritage truck museum (Own Expense)
- Evening Entertainment at the North Gregory Hotel
- Overnight in Winton

MEALS: B, M/T, L, D

DAY 4

Friday May 19th

Winton to Longreach

- Tour and lunch at Age of Dinosaurs Museum
- Travel to Longreach
- Free time in Longreach in afternoon
- Overnight Longreach

MEALS: B, L, D



DAY 5

Saturday May 20th

Touring in Longreach



- Qantas Founders Museum tour
- Lunch (Own expense)
- Stockman's Hall of Fame
- Drivers Sunset Cruise and Dinner on the Thomson River
- Overnight in Longreach

MEALS: B, D

DAY 7

Monday May 22nd

Rockhampton to Airlie Beach

- Coach morning Tea
- Mackay Harbour for Lunch (Own Expense)
- Free Time in Airlie Beach
- Overnight Airlie Beach

MEALS: B, M/T, D



DAY 8

Tuesday May 23rd

Boat Cruise from Airlie Beach



- Day tour- Three Island guided tour of the Whitsundays
- Overnight Airlie Beach

MEALS: B, L, D

DAY 9

Wednesday May 24th

Airlie Beach to Atherton Tablelands



- Travel home today
- Lunch and guided tour at Billabong Sanctuary
- Cardwell waterfront
- Arrive home late afternoon

MEALS: B, L, A/T

DAY 6

Sunday May 21st

Longreach to Rockhampton



- Early start this morning
- Visit Tree of Knowledge on route to Emerald
- Picnic Lunch in Emerald
- Coach Afternoon tea
- Overnight in Rockhampton

MEALS: B, M/T, L, D

ALL INCLUSIVE PRICE

**\$2695 per person
TWIN SHARE**

**\$3515 per person
SINGLE SHARE**

Contact us for additional information or booking forms.
Terms and conditions do apply and can be viewed on our website.

**(07) 4096 5262 and website
www.EmersonBusCompany.com.au**

MEAL LEGEND

**Breakfast (B) - 8
Morning Tea (MT) - 4**

**Lunch (L) - 7
Afternoon Tea (AT) - 1
Dinner (D) - 8**